



**CUSTOMIZE YOUR  
ROLLING TARP TO MEET  
YOUR REQUIREMENTS**

**STANDARD FEATURES**

**AVAILABLE OPTIONS**



**LOADS LIKE A FLATBED... PROTECTS LIKE A VAN!™**





# STANDARD FEATURES FOR CHAMELEON ROLLING TARP SYSTEMS



## Front Tensioning System

- No tools required.
- Quickly open the tarp system without opening the rear door.
- Accepts winch bar for even greater tensioning.



## Rear Locks w/ Tarp Tensioning Adjustment

- Simplest & quickest locking system on the market.
- No tools required.
- Adjusts tarp tension when required.



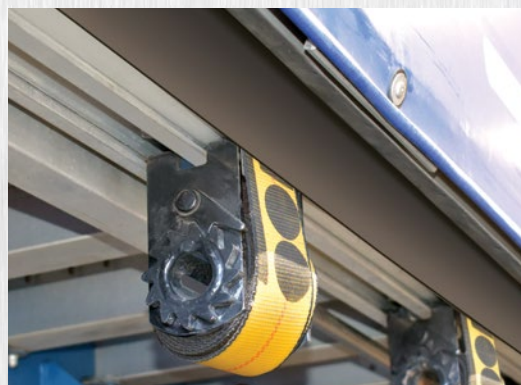
119	123	143	168
221	244	311	323
356	537	543	549
566	590	619	636
679	682	705	717
763	830	905	907
			911

## Fade Resistant UV Protected PVC Fabrics

- 20oz (typical) & 40oz+ in wear areas.
- Standard white roof lets light shine in.
- Welded seams (not sewn).
- Many standard colors available.

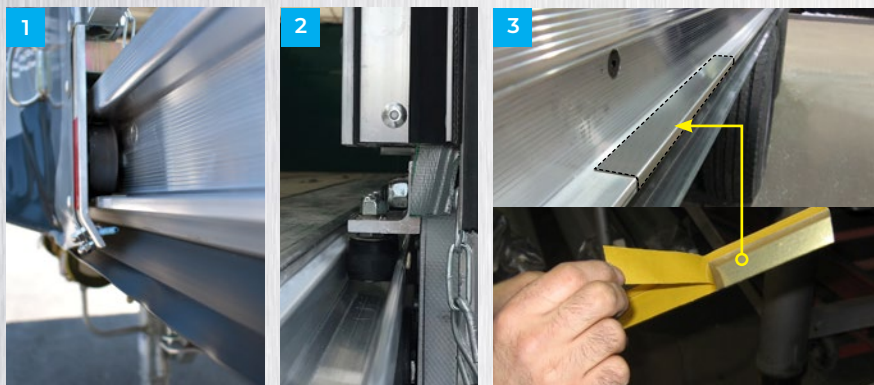
## Dual-Mudguard Sealing Rail System

- Stops road-spray from entering the load volume.
- Flexible rubber (high/low temperature design) seals around straps to keep water out.





# STANDARD FEATURES FOR CHAMELEON ROLLING TARP SYSTEMS

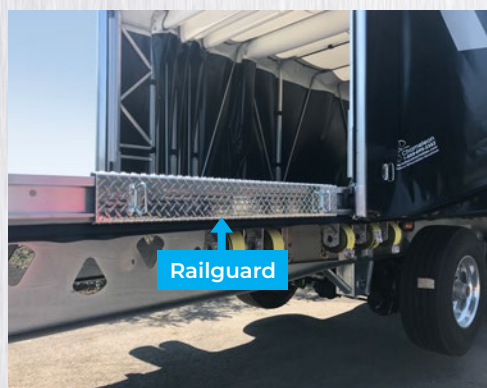
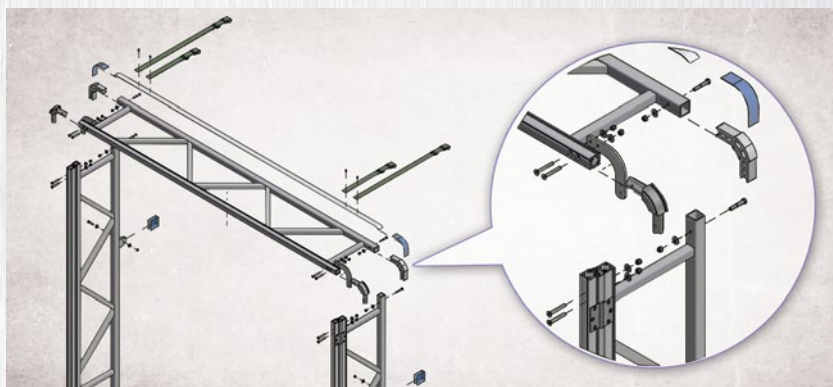


## Wheels & Rail System

- Low-friction rails and wheels with sealed stainless steel bearings for low-wear & easy rolling. No greasing needed. (1)
- The small guide wheels ensure easy 1-person operation. (2)
- Stainless replaceable wear strips protect rails against wear. (3)

## Easy-to-repair Modular Structure

- Chameleon is continually making its products easier to repair.
- Most of our parts can be shipped overnight to get you back on the road quicker.
- Components are fastened together rather than welded for quicker repair & installation.



## Forklift Railguard

- Protects the rails against forklift collision when loading and unloading.
- Place where you want the forklift to load.

## Rear Door Sealing

- Mechanical door clamp system seals/secures the sides of the door better and is more reliable than velcro/buckle systems.
- 2-Stage sealing system along base of door for tight seal against snow and road spray.
- Ergonomic handle & adjustable door clamp compression adjustment thread.





## HEADBOARD - STANDARD FEATURES

Choose from the following options at **no extra** charge.

### Gloss Tread Finish



## HEADBOARD - AVAILABLE OPTIONS

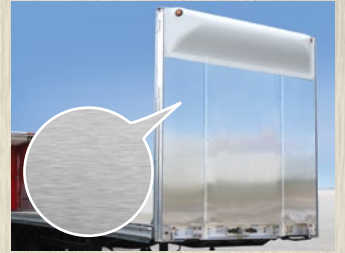
Choose from the following options at an extra charge.

### Stainless Steel Finish



- Mirror-like stainless steel skin on lightweight aluminum structure.

### Smooth Mill Finish



### Headboard Wraps



- Customize the front of your Chameleon to match your corporate branding or truck.
- Add color, logos and/or graphics.

HEADBOARD FINISHES

### Standard Integrated Chain Rack



### Headboard Shelving



### Chain Binder Racks



HEADBOARD ACCESSORIES

### Adjustable Headboard Vents

- Ventilation for food and gas transport.



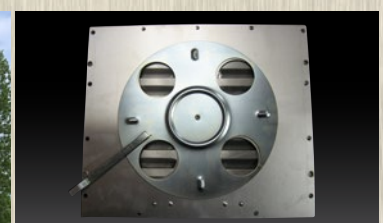
Exterior



Interior



Exterior



Interior



## HEADBOARD - STANDARD FEATURES

Choose from the following options at **no extra charge**.

### White Air Deflector



- Engineered using air flow analysis software to improve fuel economy and tarp longevity.

### Aluminum Top Plate (Smooth Mill Finish)



Features 2x LED clearance lights.

## HEADBOARD - AVAILABLE OPTIONS

Choose from the following options at an **extra charge**.

### Customized Air Deflector



- Custom color-matched paint.
- Custom decals.

### Headboard Access Door



Scan/Click for Video

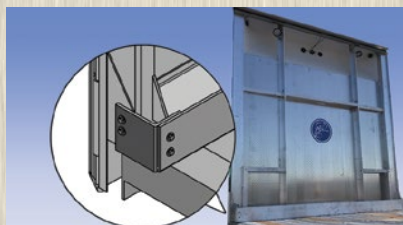
- 28" x 58" opening with 3-point locking system.
- Exterior & interior handles.
- Custom sizes available.

### Headboard Aerodynamic Kit



- Fuel savings of 2-3%. Pays for itself in approximately 12 months.

### Headboard Bracket Protector



- Protects headboard brackets when loading tight against the headboard.

### DOT-Rated Headboard



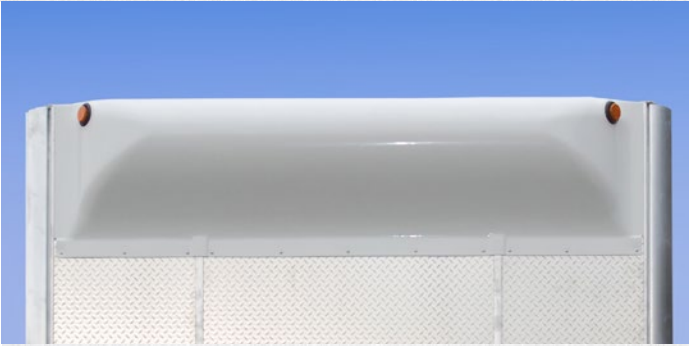
- 58,000 lbs rating; Tested according to 49 CFR 393.114 (C) 2.
- Headboard access door not available on DOT headboards.
- Subject to trailer specification review.



## HEADBOARD - STANDARD FEATURES

Choose from the following options at **no extra** charge.

### Headboard Standard Lighting



## HEADBOARD - AVAILABLE OPTIONS

Choose from the following options at an **extra** charge.

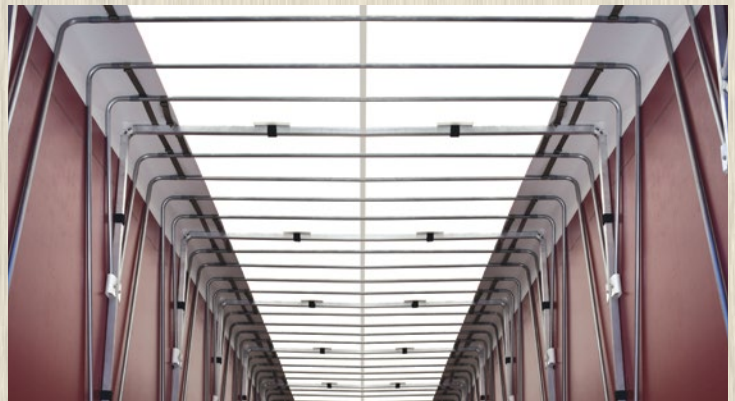
### Custom Headboard Lighting



### Single Lift Bows



### Double Lift Bows





## REAR DOOR SYSTEMS STANDARD FEATURES

Choose from the following options at **no extra** charge.

### Rope-Operation



## REAR DOOR SYSTEMS AVAILABLE OPTIONS

Choose from the following options at an extra charge.

### Rope-Door Lifting Device



- Gas-cylinder powered frame lifts rope operated roll-up door up to clear your high loads.
- Alternative to crank-operated rear door setups to provide more height clearance but without tools.

### Van-Style Rear Doors



- Standard in white.
- Color vinyl wraps available.
- Decaling available.
- Stainless Steel.





## REAR DOOR SYSTEMS STANDARD FEATURES

Choose from the following options at **no extra** charge.

### Crank-Operation



## REAR DOOR SYSTEMS AVAILABLE OPTIONS

Choose from the following options at an extra charge.

### Hybrid Door Operation



- Provides speed/ convenience of rope-operated door and height clearance of crank-operated door.

### Rear Door Extension Kit



- Cover a load that extends past the rear of the deck.
- Approximate 10-12" extension.
- Neatly folds away into the rear bow frame when not in use.





## AVAILABLE OPTIONS - GRAPHICS

Choose from the following options at **an extra charge**.

### Graphics - Digital



- Less expensive than a billboard and seen by millions.
- Photo quality printing technology.
- Very affordable in-house graphic design services available.



GRAPHICS



## AVAILABLE OPTIONS - MAXIMIZE LOAD CAPACITY

Choose from the following options at **an extra** charge.

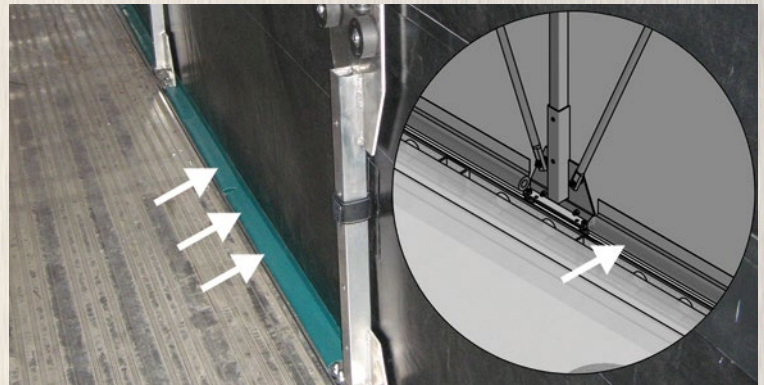
RAIL UPGRADES

### Lightbar



- Aluminum enclosure with stainless steel face, ¾" amber LEDs

### Tarp-Integrated Rail Cover



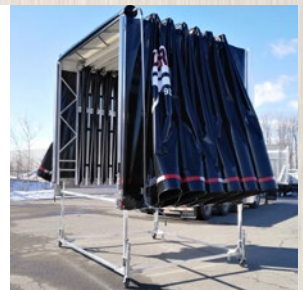
- Ideal for hauling hay, sod or loads that typically leave significant debris on trailer deck.

MAXIMIZE LOAD CAPACITY

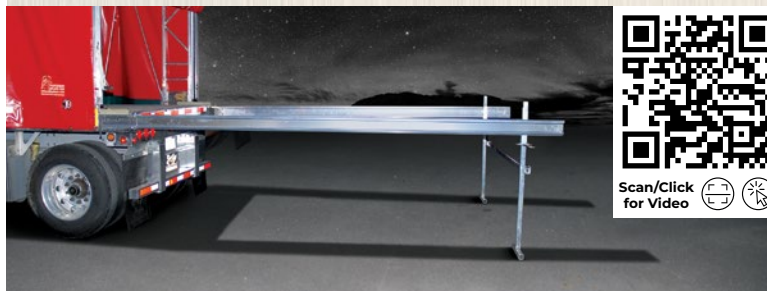
### Roll-Off Stand



- Oversized loads? Roll the tarp system off the deck and store it on a roll-off stand.
- Swivel casters for easy relocation in your shop.
- Leveling legs to adjust to trailer height.



### Rail Extensions



- Allows access to entire length of trailer while loading extra long loads.
- Portable - Disassembles to travel with trailer.
- Leveling legs to adjust to trailer height.



### Oversized Heights & Widths



- Inside Height Clearance: Up to 144".
- Inside Width Clearance: Up to 104".
- Chameleon can do even larger heights & widths for special projects.





REQUEST FOR QUOTE FORM

COMPANY: \_\_\_\_\_ DATE: \_\_\_\_\_  
FIRST/LAST NAME: \_\_\_\_\_



TRAILER/DECK TYPE	<b>FLATBED TRAILER</b> - If Applicable: On Board Forklift; <b>DROP DECK TRAILER</b> - Operation Type: Option 1 (Pallet Loads); Option 2 (Full Lower Deck Access); Split at Drop <b>STRAIGHT TRUCK DECK</b> - If Applicable: On Board Forklift; Overhead Boom; Knuckle Boom; Lift Gate <b>B-TRAIN FLATBEDS</b> <b>A-TRAIN FLATBEDS</b> <b>TILT DECK</b> - Type: Flatbed Trailer; Truck/Carrier Deck; Drop Deck Trailer <b>GOOSE NECK UTILITY TRAILER</b> <b>BUMPER HITCH UTILITY TRAILER</b> <b>LOW-BOY / DETACHABLE GOOSENECK</b> <b>OTHER:</b> _____																													
TRAILER/DECK LENGTH  These specifications are an estimated average. Weights & retracted lengths will vary slightly according to exact kit sizing and features selected.	Trailer/Deck Length: _____ -(For A & B-Trains: Specify both trailer lengths) • 48'-53' (2020lbs & 108" Retracted Length - Note: Drop Deck: 2750lbs & 136" Retracted Length) • 41'-48' (1870lbs & 96" Retracted Length - Note: Drop Deck: 2560lbs & 125" Retracted Length) • 34'-41' (1720lbs & 84" Retracted Length - Note: Drop Deck: 2360lbs & 114" Retracted Length) • 26'-34' (1575lbs & 73" Retracted Length) • 18'-26' (1420lbs & 62" Retracted Length) • 14'-18' (1270lbs & 51" Retracted Length) • 3'-14' (1125lbs & 40" Retracted Length)																													
INTERIOR WIDTH CLEARANCE REQUIRED	Interior Width Clearance Required: _____ • Legal limit is 104" interior width on 102" deck/trailer (Resulting in 108" overall width legal limit) • Allowed to add up to 2" of interior width in addition to the trailer width (Ex: 96" Trailer + 2" Additional = 98" Interior Width)																													
INTERIOR HEIGHT CLEARANCE REQUIRED	Interior Height Clearance Required: _____ Price Level 1: 60" - 102" Interior Height (Not applicable to drop decks) Price Level 2: Additional 6" Increments (Applicable to drop decks) We customize to the nearest 1/2" incremental height, at no extra charge, in order to maximize your load volume																													
OVERALL HEIGHT LIMIT REQUIRED	13'6";    14'0";    Other _____ (Example: Your drive-in garage door is lower than 13'6")																													
STANDARD NO-CHARGE FEATURES																														
AVAILABLE OPTIONS																														
HEADBOARD FINISHES	Aluminum Gloss Tread Finish	Mirror-like Stainless Steel Skin Aluminum Smooth Mill Finish Headboard & Wing Wrap. Color: _____																												
HEADBOARD ACCESSORIES	White Air Deflector Aluminum Top Plate (Smooth Mill Finish)	Headboard Shelving ↳ Chain Binder Rack    Side Shelves    Center Shelf    Floor Basket Adjustable Headboard Vents ↳ 2x Door-Style Vents    2x Adjustable Vents Headboard Bracket Protector Headboard Access Door (Typically 28" x 58") Painted Air Deflector - Color: _____ Air Deflector Decals Headboard Aerodynamic Kit (2-3% fuel savings) DOT-Rated; Access Door Not Available																												
HEADBOARD LIGHTING		Additional 3x Amber LED Clearance Lights (5x Total) Additional 7x Amber LED Clearance Lights (9x Total) 2x Interior LED Flood Lights Strobe/Emergency Light Shelves (2x)																												
LIFT BOWS SYSTEM	Single Lift Bows (8" Roof Folds)	Double Lift Bows (3" Roof Folds)																												
REAR DOOR SYSTEMS	Crank-Operated Roll-up Door Rope-Operated Roll-up Door	Van-Style Door White or Color: _____ Decals: _____ Door Lifting Device (Rope-Operated Door Only) Rear Door Extension Kit Hybrid Door System (Rope & Crank Function)																												
GRAPHICS		Digital (Image-based Graphics and/or Logos)																												
OVERSIZED LOAD CONVENIENCE PACKAGES		Rail Extensions (Portable) Roll-Off Stand with Casters (Store system at home)																												
RAIL UPGRADES		Lightbar (Both Sides) Tarp-Integrated Rail Cover																												
TARP COLOR (SIDES & DOOR)	<table><tr><td>#</td><td>119</td><td>123</td><td>143</td><td>168</td><td>221</td><td>244</td><td>311</td><td>323</td><td>356</td><td>537</td><td>543</td><td>549</td><td>566</td></tr><tr><td></td><td>590</td><td>619</td><td>636</td><td>679</td><td>682</td><td>705</td><td>717</td><td>763</td><td>830</td><td>905</td><td>907</td><td>911</td><td></td></tr></table>		#	119	123	143	168	221	244	311	323	356	537	543	549	566		590	619	636	679	682	705	717	763	830	905	907	911	
#	119	123	143	168	221	244	311	323	356	537	543	549	566																	
	590	619	636	679	682	705	717	763	830	905	907	911																		
ROOF COLOR	White Translucent      Same Color as Tarp Sides																													





***Chameleon will customize your rolling tarp  
to meet your requirements. Challenge us  
to provide solutions to your specific needs.***



Scan/Click  
for Website



**OFFICE:** 115 Hymus Boulevard,  
Pointe-Claire, QC, Canada H9R 1E5



**TOLL-FREE:** 1 888.695.3382



**INTERNATIONAL:** (514) 695.3382



**FAX:** (514) 630.7266



**EMAIL:** [info@chameleon.ca](mailto:info@chameleon.ca)



**www.rollingtarps.com / www.chameleon.ca**